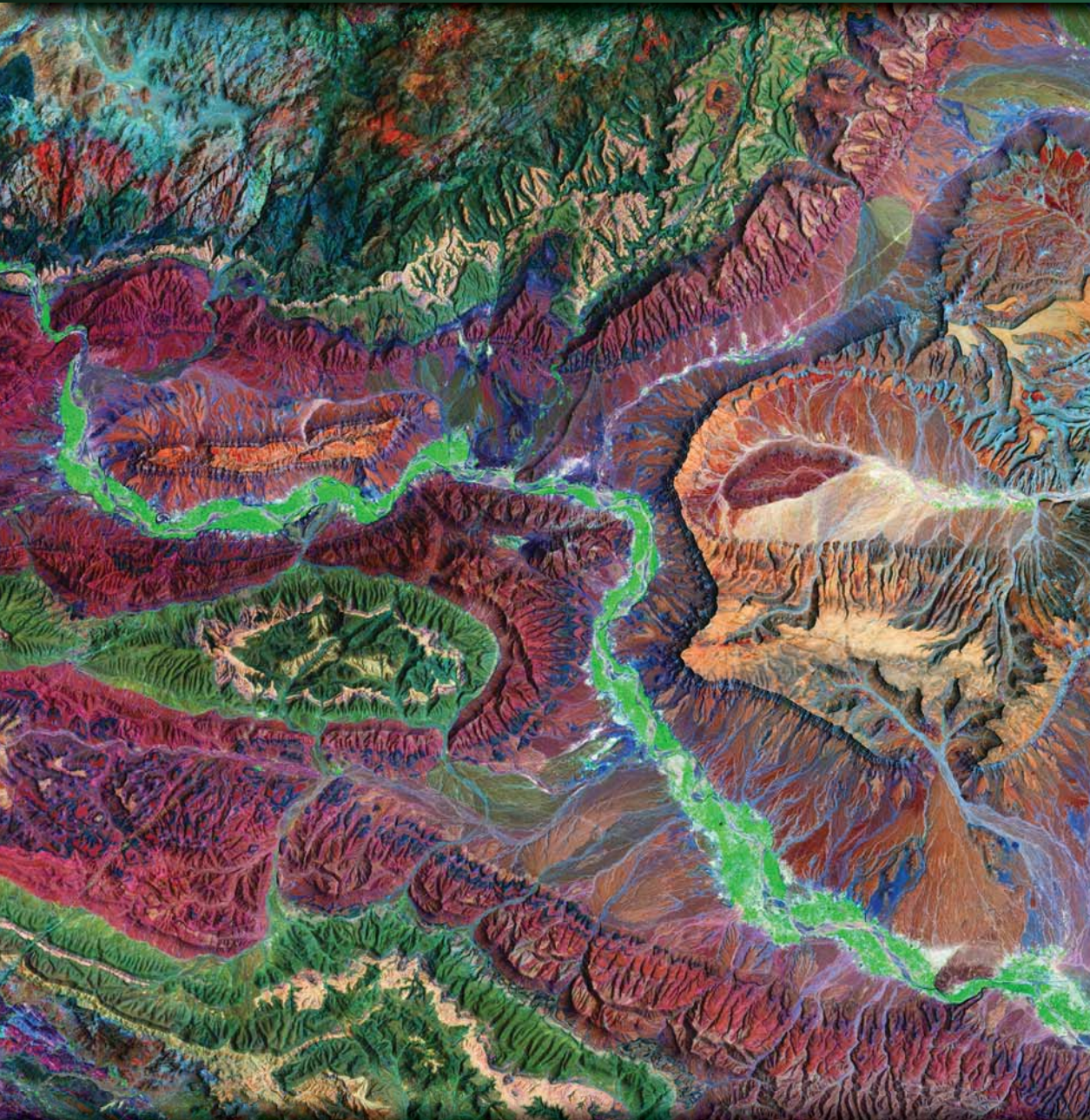




The Geological Society of London's

# Lyell Collection 2010

Visit the Lyell Collection now at [www.lyellcollection.org](http://www.lyellcollection.org)



TITLE	2010 products	2010 content	Access options	UK Price UK price - £*	Rest of World Price Row price - £*	Row price - \$
Lyell Collection Complete	LCC	all titles listed below, in their entirety	LCC online-only** LCC online + print	£3,294 £3,459	£3,499 £3,674	\$6998 \$7348
Journal of the Geological Society JGS	JGS	1845 to current	JGS online-only JGS online + print	£779 £818	£865 £908	\$1730 \$1817
Quarterly Journal of Engineering Geology and Hydrogeology	QJEGH	1967 to current	QJEGH online-only QJEGH online + print	£369 £387	£413 £434	\$826 \$867
Geochemistry: Exploration, Environment, Analysis	GEEA	2001 to current	GEEA online-only GEEA online + print	£199 £209	£225 £236	\$450 \$473
Scottish Journal of Geology	SJG	1965 to current	SJG online-only SJG online + print	£185 £194	£185 £194	\$370 \$389
Proceedings of the Yorkshire Geological Society	PYGS	1837 to current	PYGS online-only PYGS online + print	£150 £158	£150 £158	\$300 \$315
Transactions of the Geological Society of London	TRN	1811 to 1856	only available as part of the Lyell Collection Complete			
Special Publications	SP	330+ volumes	SP online-only SP online + print	£1,995 £2,095	£2,080 £2,184	\$4160 \$4368
Memoirs	MEM	33 volumes	only available as part of the Lyell Collection Complete			
Engineering Geology Special Publications	EGSP	22 volumes	only available as part of the Lyell Collection Complete			
Petroleum Geology Conferences	PGC	4 volumes	only available as part of the Lyell Collection Complete			

Note that for individual titles the supplement for print is 5% of the online-only price

\* VAT rates as applicable at the time of invoicing - please see <http://www.geosoc.org.uk/lyellcollection/prices> for current VAT rates for UK and EU subscribers

\*\* for online only subscribers to the Lyell Collection Complete, a complete set of 2010 print copies of the Special Publications can be provided for £100/\$200 for the 2010 subscription year

Visit the Lyell collection now at [www.lyellcollection.org](http://www.lyellcollection.org)

Foundation Sponsors



See inside for key  
Lyell Collection  
developments for 2010



# What is the Lyell Collection?

Launched in 2007 to celebrate 200 years of the Geological Society of London, the Lyell Collection is an online collection comprising the Society's journal titles, Special Publications and key book series. Cutting edge science sits alongside important historical material, all captured and presented to the highest electronic standards and benefiting from the extensive functionality of HighWire Press' platform.

With 260 000 peer-reviewed pages, 18 000 articles and 330 Special Publication volumes, the Lyell Collection is an invaluable tool for the researcher and student alike.

- Full-text in HTML and PDF format
- Actively linking to cited references
- Free public access to alerts, search functions and abstracts
- Selected open access articles
- Hosted by HighWire Press

## NEW DEVELOPMENTS FOR 2010:

**Lyell Collection Complete (LCC):** There will be no price increase for 2010, despite the addition of substantial new content and new titles.

**Availability:** From 2010 Lyell Collection subscriptions will be, by default, online-only. Subscribers wishing to receive print copies may do so by the payment of a 5% print surcharge. Online-only subscribers to the LCC may receive a print copy of all Special Publications by payment of £100/\$200.

**Full archival access for all subscribers:** The distinction between "Plus" and "Current" subscriptions will be discontinued – all subscribers will receive full archival access for their subscribed-to titles.

**New titles:** Three new titles will be added to the Lyell Collection at no additional charge to LCC subscribers:

- PGC** Petroleum Geology Conference series
- SJG** Scottish Journal of Geology
- PYGS** Proceedings of the Yorkshire Geological Society

**Migration to H2O:** During 2010 all Lyell Collection titles will be migrated to HighWire Press' enhanced hosting platform.

## TO ORDER THE LYELL COLLECTION OR REQUEST A FREE TRIAL CONTACT:

### In UK and Europe:

Accucoms BV, Schipolweg 101b, 2316 XC Leiden,  
The Netherlands  
Email: geologicalsociety@accucoms.com  
Telephone: +31 71 524 7630 Fax: +31 71 528 0628  
Web: www.accucoms.com

### In USA and Canada:

Geological Society at PCG, 875 Massachusetts Avenue  
7th Floor, Cambridge, MA 02139, USA  
Email: geologicalsociety@pcgplus.com  
Telephone: +1 617 395 4065  
Fax: +1 617 354 6875  
Web: www.pcgplus.com

### All other regions:

Geological Society Publishing House,  
Unit 7 Brassmill Enterprise Centre, Brassmill Lane,  
Bath, BA1 3JN, UK  
Email: sales@geolsoc.org.uk  
Telephone: +44 (0)1225 445046  
Fax: +44 (0)1225 442836  
Web: www.geolsoc.org.uk

Cover: Structural features revealed in false colour, Southern Anti-Atlas Mountains, Morocco. This image is from a selection of over 200 to be found in 'Above the World', a book compiled by Fugro NPA Satellite Mapping and published by Cassell Illustrated. Please visit [www.fugro-npa.com](http://www.fugro-npa.com). ©Fugro NPA Satellite Mapping. All rights reserved. No production, copy or transmission of these images may be made without written permission.

## Titles featured in the Lyell Collection



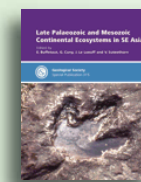
**Journal of the Geological Society**  
JGS publishes topical and high quality papers, summarising the results of recent research across the full range of the Earth sciences. JGS includes the Quarterly Journal of the Geological Society published 1845 to 1971.



**Transactions of the Geological Society**  
Published between 1811 and 1856, the Transactions captured the most significant geological communications of the period. Many papers have become classics and print copies of this historical material is now extremely rare.



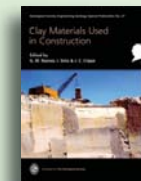
**Quarterly Journal of Engineering Geology and Hydrogeology**  
QJEGH is an established international journal featuring papers concerning geology as applied to civil engineering, mining practise and water resources.



**Special Publications**  
Special Publications are renowned throughout the global geosciences community for their high quality of science and production. Each volume focuses on a special theme and represents a balanced, state-of-the-art treatment of the subject matter.



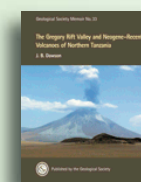
**Geochemistry: Exploration, Environment, Analysis**  
GEEA covers all aspects of the application of geochemistry to the exploration and study of mineral resources, and related fields, including the geochemistry of the environment.



**Engineering Geology Special Publications**  
This successful and popular series is devoted to the wide range of engineering geology and geotechnical topics. Each volume provides a balanced coverage of its subject matter.

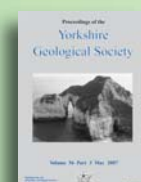


**Scottish Journal of Geology**  
SJG publishes papers on all aspects of Scottish geology and its contiguous areas, including Europe, the North Sea and the margins of the North Atlantic. It also includes aspects of the Earth sciences that cannot be discussed solely in terms of Scottish geology.

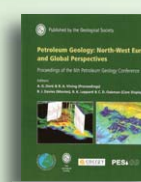


**Memoirs**  
Memoirs are definitive treatments of their subjects by acknowledged experts in their field. They may be edited collections of papers, or can be written by a single group of authors.

NEW



**Proceedings of the Yorkshire Geological Society**  
PYGS has been published without a break since 1871 and is one of the leading journals of British geology, with a particular focus on the geology of northern England and its neighbouring areas.



**Petroleum Geology Conferences series**  
The fully edited Proceedings of the 4<sup>th</sup>, 5<sup>th</sup>, 6<sup>th</sup> and 7<sup>th</sup> conferences in this prestigious conference series will be hosted on the Lyell Collection.

NEW

NEW